

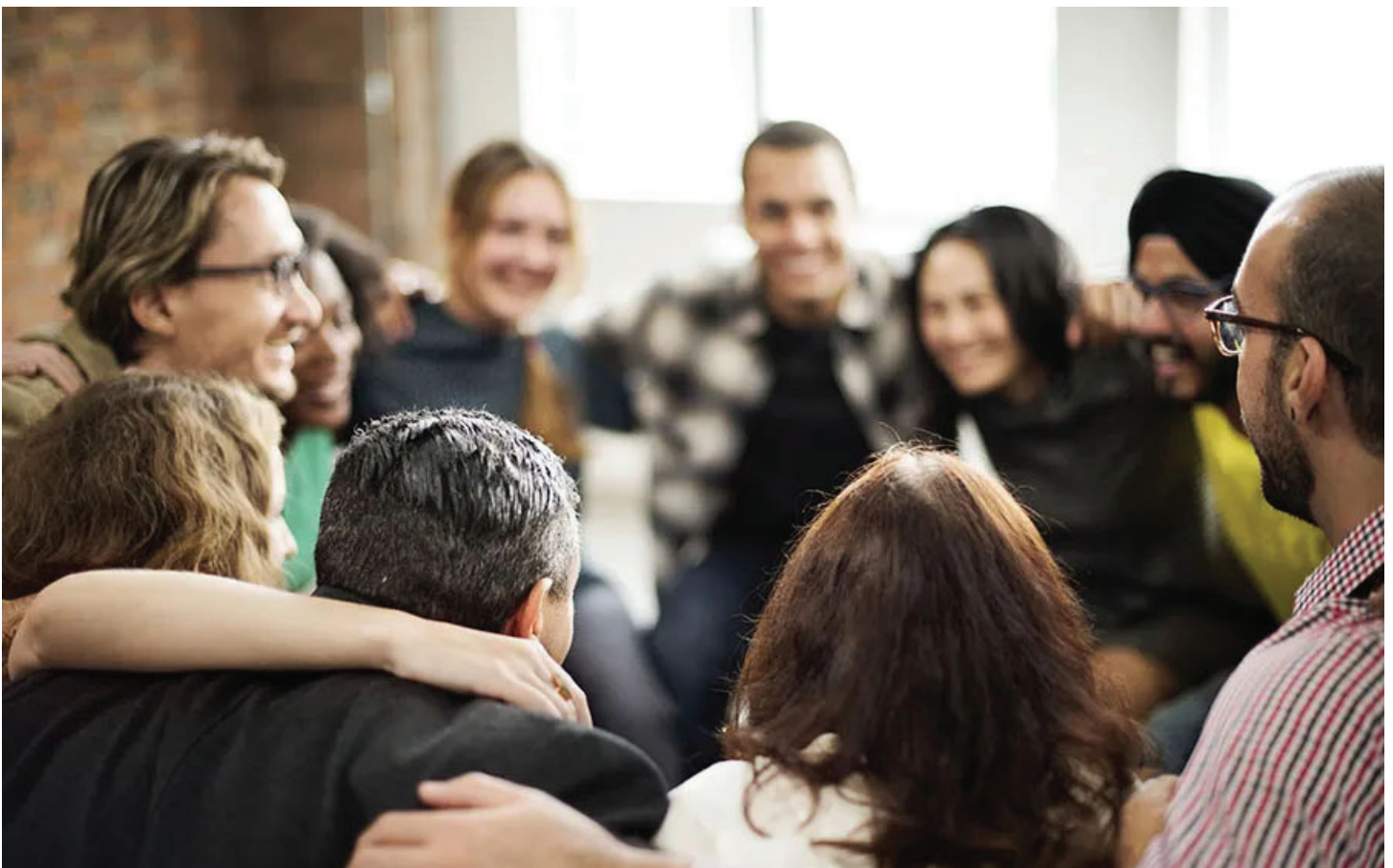
Coming up with new ideas comes easy to those who want to advance the Kingdom of God and reach more people for Christ. It's taking the next steps to move from idea to launch and implementation that can be stressful, frustrating, and even sometimes intimidating.

But it doesn't have to be that way. We can help you answer the pressing question of "What's next?" for your Kingdom idea. Take the fear and uncertainty out of getting started with the information you will gain from our new What's Next? Launch Survey.

This new survey will encourage you to think through six key areas of mission and ministry. Your customized report based on your responses will become the foundation for creating a What's Next? Step-by-Step Plan to implement your Kingdom idea.

What's Next? Let's begin working together to map out your next steps as you carry out your new idea for mission and ministry.

If you would like a free report from Tracee based on your responses, please email the survey to tracee@churchdoctor.org. Or you can take the online version of this survey at WhatsNextLaunchSurvey.com.



1. Does your church or ministry have a written philosophy of ministry statement that clearly communicates who you are, what you do, how you do it, and how God has uniquely gifted and resourced you or your church to carry out mission and ministry in your current context?

Do you know your spiritual gifts, the gifts of those on your team, and the gifts profile of your congregation?

2. Do you have a documented strategy for how your vision and philosophy of ministry are communicated and shared internally with those in the congregation and externally with those beyond the walls of your church?
3. Do you consider your church/ministry to be a healthy spiritual community focused on making disciples, multiplying leaders, and reaching new people for Christ? What examples can you point to that are visible representations of disciples making disciples? Where is God blessing your church?

